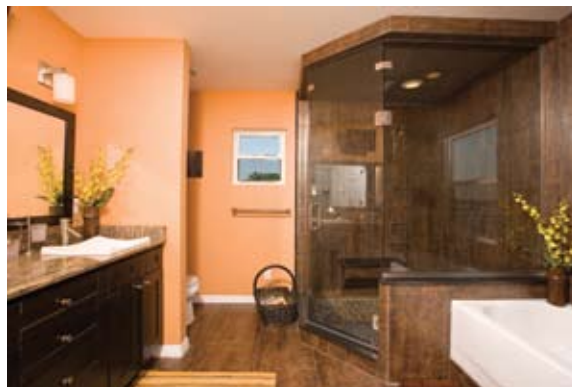


FOCUS ON MASTER SUITES



But That's Another Story

This two-story, three-bedroom, two-bathroom home was transformed into a three-story, four-bedroom, four-bathroom home. West Coast Remodelers used an existing 432-square-foot, second-story porch to expand the family room and add a bathroom that's accessible from the pool via spiral stairs. Directly above the transformed porch, a third floor was added to serve as a new master suite. That allows the homeowners, who



sometimes work night shifts, to sleep during the day removed from the noise and hub-bub of a busy home. The former master bed-

room became a child's bedroom with a private bathroom while the master bathroom was decked out with high-end Kohler fixtures and oversized tile set in a staggered pattern. The walk-in steam shower features an all-glass enclosure, a music system, a rain showerhead, body sprays and black pebble stone that "massages" your feet. The new third-floor balcony, with glass railings and decorative ceramic tile, boasts beautiful views of Weedon Isle and Tampa Bay.